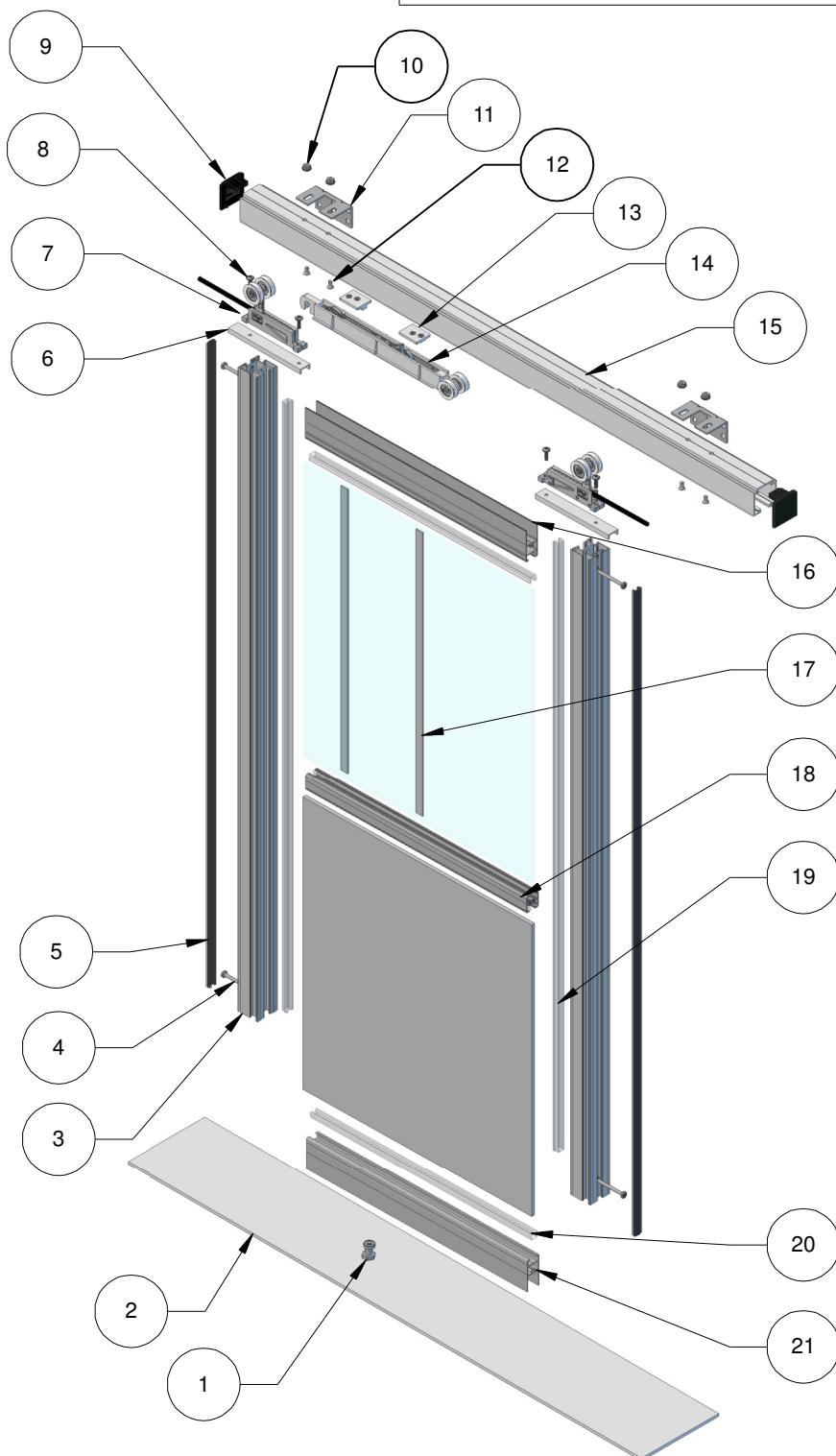
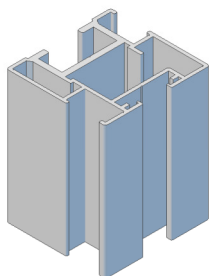
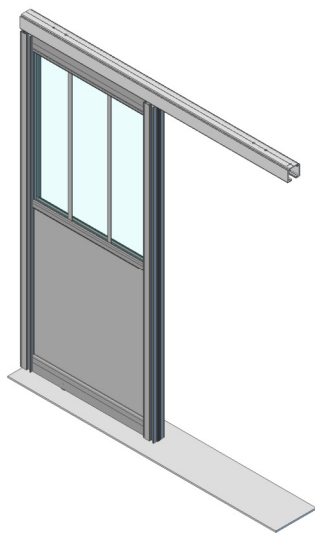
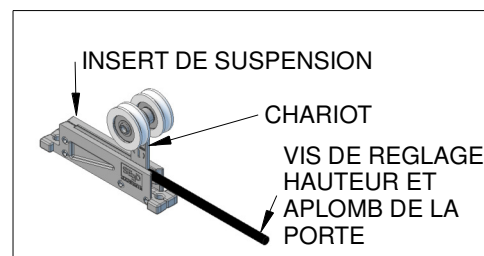




Brevet n°0700534



N°	Qté	Nom de la pièce	Réf SEED
1	1	Guide bas	GUIDBAS
2	1	Sol	
3	2	Poignée P810	P810
4	4	Vis d'assemblage 4.8x41	VIS4.8*41
5	2	Joint de finition	JBUT
6	2	Insert fixation chariot	INSERTFIXCHAR40
7	2	Chariot 40 KG	CHARIOT40N
8	4	Vis 5x20	vis5*20
9	2	Capot rail 40 KG	CAPOT40
10	4	Ecrou M5	ECROUM5
11	2	Equerre suspension rail	EQUERRESUSP
12	4	Vis M5x10 (tête fraisée)	VIS5*10
13	2	Activateur frein amortisseur	ACTIVFR40
14	1	Frein amortisseur	FR40-D
15	1	Rail haut 40 KG	RHS43
16	1	Traverse haute 52	THB52
17	4	Plat à coller 25 mm	PLAT25
18	1	Traverse intermédiaire 28	Ti28
19	2	Joint de vitrage	PVITRAGE
20	4	Joint de vitrage	PVITRAGE
21	1	Traverse basse 52	THB52

Réf.	Quantité	Titre/Nom, désignation, matière, dimension etc			Article No./Référence	
Dessiné par <b>A - D</b>	Controlé par <b>R.M</b>	Approuvé par - date <b>06/12/2017</b>	Modifié le	Nom fichier	Echelle <b>1 / 1</b>	



SEED GAMMISTE  
ZA des Estuaires - Avenue de la Pierre Vallée  
50220 POILLEY  
Tél:02 33 89 02 83 / Fax:02 33 89 59 33

## FICHE TECHNIQUE P810-S-40KG

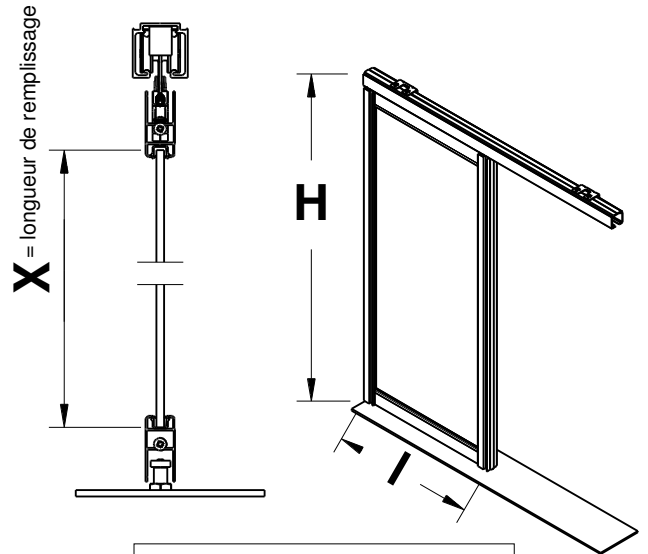
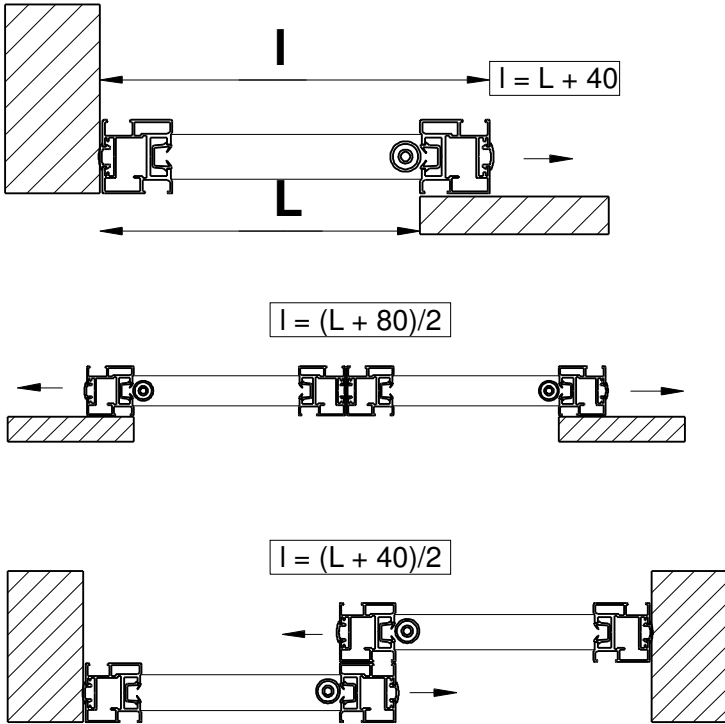
PAGE 1

Version

Format

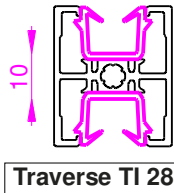
# Détermination des côtes de fabrication

**L** = Côte de passage  
**I** = Largeur porte finie  
**X** = Longueur de remplissage  
**Y** = Largeur de remplissage



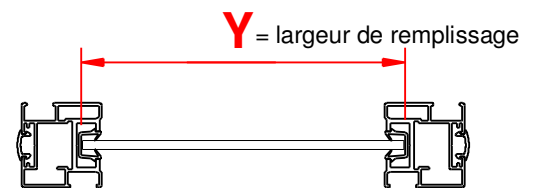
Si 1 remplissage:  
 **$X = H - 152 \text{ mm}$**

**Traverse haute et basse =  $I - 77 \text{ mm}$**   
**Rail haut = à préciser**  
**Poignée =  $H - 60 \text{ mm}$**



Si **plusieurs** remplissages:  
 **$X = H - 152 - (\text{NB TRAVERSES} \times 10)$**   
**NB REPLISSAGE**

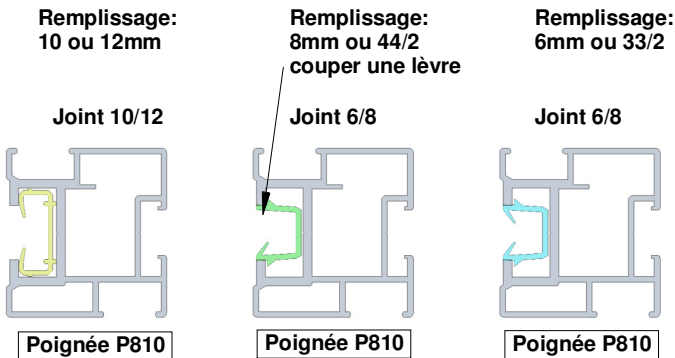
## Montage avec profil de vitrage



**$Y = I - 62 \text{ mm}$**

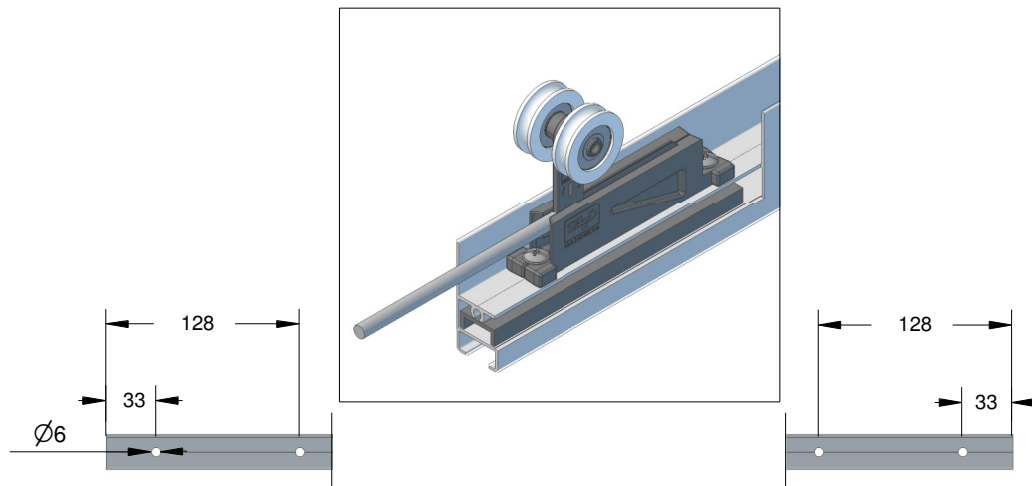


Brevet n°0700534



Réf.	Quantité	Titre/Nom, désignation, matière, dimension etc			Article No./Référence Brevet n°0700534	
Dessiné par <b>A-D</b>	Contrôlé par <b>R.M</b>	Approuvé par - date <b>06/12/2017</b>	Modifié le	Nom fichier	Echelle <b>1 / 1</b>	

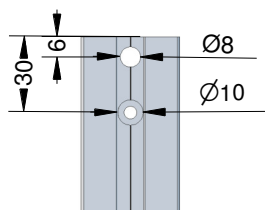
# PERCAGE DE LA TRAVERSE HAUTE



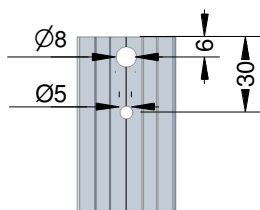
Brevet n°0700534

# PERCAGE DES POIGNEES

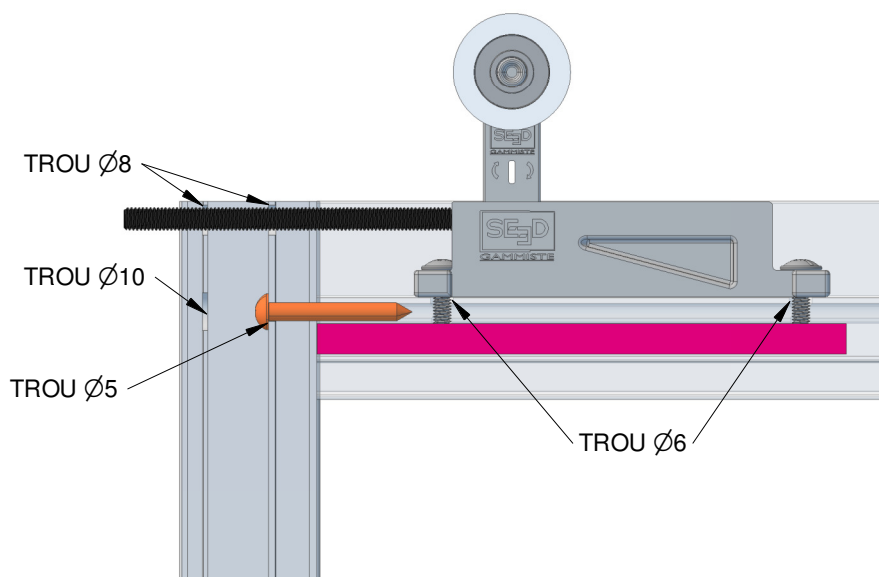
## COTE JOINT DE FINITION



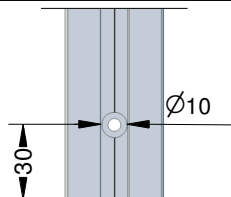
## COTE REMPLISSAGE



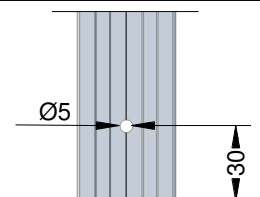
HAUT



## COTE JOINT DE FINITION



## COTE REMPLISSAGE



BAS

Réf.	Quantité	Titre/Nom, désignation, matière, dimension etc			Article No./Référence	
Dessiné par <b>A-D</b>	Controlé par <b>R.M</b>	Approuvé par - date <b>06/12/2017</b>	Modifié le	Nom fichier	Echelle <b>1 / 1</b>	



SEED GAMMISTE  
ZA des Estuaires - Avenue de la Pierre Vallée  
50220 POILLEY  
Tél: 02 33 89 02 83 / Fax: 02 33 89 59 33

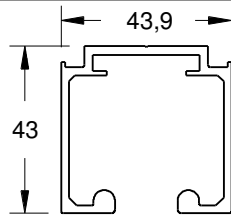
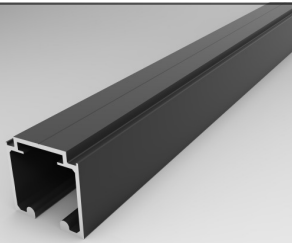
## FICHE TECHNIQUE P810-S-40KG

PAGE 3

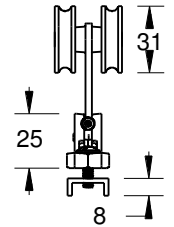
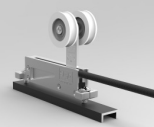
Version

Format

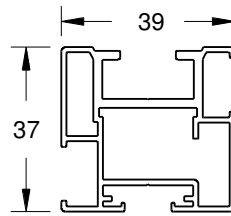
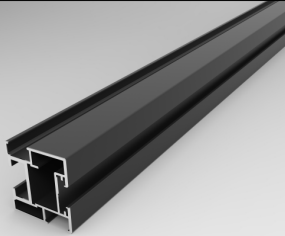
### RAIL HAUT



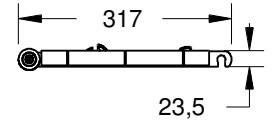
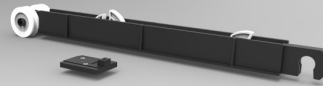
### CHARIOT 40 KG N



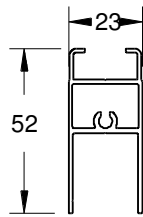
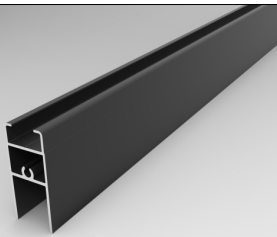
### POIGNEE



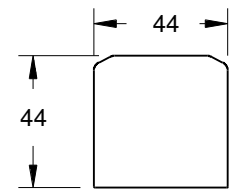
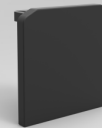
### FREIN AMORTISSEUR + ACTIVEUR



### TRAVERSE HAUTE ET BASSE 52

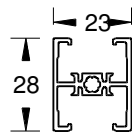
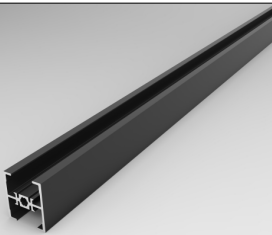


### CAPOT RAIL 40 KG

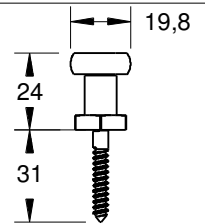


Epaisseur CAPOT = 4 mm

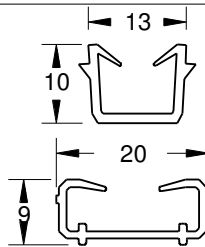
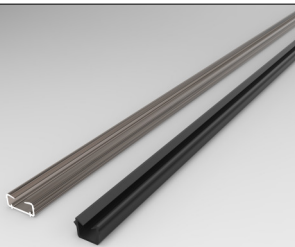
### TRAVERSE INTERMEDIAIRE 28



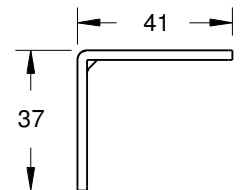
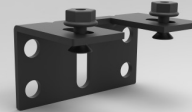
### GUIDE BAS



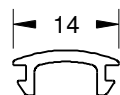
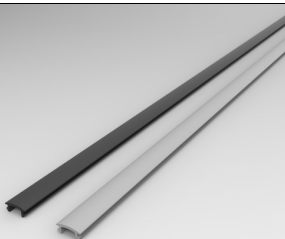
### JOINT DE VITRAGE 6 à 8 et 10 à 12



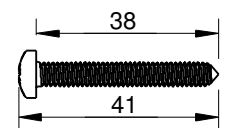
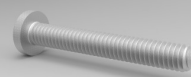
### EQUERRE SUSPENSION+VIS+ECROU



### JOINT DE FINITION



### VIS 4.8 X 41



Réf.	Quantité	Titre/Nom, désignation, matière, dimension etc			Article No./Référence Brevet n°0700534	
Dessiné par <b>A-D</b>	Contrôlé par <b>R.M</b>	Approuvé par - date <b>06/12/2017</b>	Modifié le	Nom fichier	Echelle <b>1 / 1</b>	



SEED GAMMISTE  
ZA des Estuaires - Avenue de la Pierre Vallée  
50220 POILLEY  
Tél: 02 33 89 02 83 / Fax: 02 33 89 59 33

### FICHE TECHNIQUE P810-S-40KG

PAGE 4

Version

Format